

Through the Line

Information for communities along our pipeline right-of-way in Northern Minnesota

How to reach us:

Tribal engagement

Patrick Hughley
218-522-4709
patrick.hughley@enbridge.com

Community engagement

Laura Kircher
715-395-3848
laura.kircher@enbridge.com

Land services

Steve Johnson
218-269-2201
stevenp.johnson@enbridge.com

Todd Ochsner
715-395-3813
todd.ochsner@enbridge.com

MayRinda Cain
218-755-6717
mayrinda.cain@enbridge.com

Scott Sanders
701-857-0851
scottk.sanders@enbridge.com

For more information on Enbridge projects in Minnesota, call **1-855-788-7812** or visit enbridge.com



Know what's below.
Call before you dig.



This newsletter printed by Visions, Inc., a Native-owned business.

This photo shows Enbridge's pipeline right of way path alongside other utility and rail ways as well as Hwy 2 where it crosses the Mississippi River on the Leech Lake Reservation.



Dear neighbor

Message from Trent Wetmore

Boozhoo and hello. These are unsettling times with the COVID-19 crisis. We are sending this newsletter to inform readers about what we are doing to protect communities, our employees and all who we connect with in our operations during this unprecedented time. Some of you reading this may not know us, so we'll provide background on our 70 years here. In this newsletter, we are sharing information about Enbridge's operations, our Line 3 Replacement Project, and how the company works with communities where we operate.

We celebrate the 350 men and women working at Enbridge in Minnesota on more than \$300 million worth of system investments in 2019 to keep our facilities operating safely for the communities where we live, work and play. To address COVID-19, Enbridge has developed Pandemic Protocols with standards and expectations for contractors on our projects with a strong focus on protecting people and assets. If we can't do our work safely, we won't do it.



As always, Enbridge is interested in hearing from you. Should you have any questions or comments about this newsletter, or any other matter related to the company, please contact your designated company representative as found on the back cover of this newsletter or visit enbridge.com.

Best wishes,
Trent Wetmore
Midwest Regional Director

Pipeline inspections

Enbridge on safety

Each year Enbridge conducts a significant number of system inspections from visual assessments and examinations of valves to using sophisticated in-line tools that incorporate leading imaging and sensor technology.



These inspections are capable of scanning for features that could indicate potential problems related to corrosion, cracking, mechanical damage, deformation, and manufacturing or construction defects. Inspections allow us to monitor the physical condition of our pipelines from the inside and outside to gather the information we need to keep our systems fit.

Summary of system assessments, examinations and other inspections across Enbridge in 2019:

38,377
Number of pipeline inspections

26,285
Total miles of transmission pipeline inspections

456
Number of in-line inspections
26 of these were done in Minnesota in 2019

1,948
Number of preventative maintenance digs in 2019
179 in Minnesota. 100 on Line 3

Enbridge safety report to community

Our performance at a glance

Last year, Enbridge safely delivered billions of barrels of crude oil to North American refineries, where it was converted into the gasoline, diesel, and aviation fuel that keep our society moving and our economy growing. We also moved more than 8.8 trillion cubic feet of natural gas, a key fuel to heat our homes, enable transportation and manufacturing, and energize industry. And we generated 1.75 gigawatts of renewable energy as part of the transition to a lower-carbon future. That's enough to meet the needs of 700,000 homes.

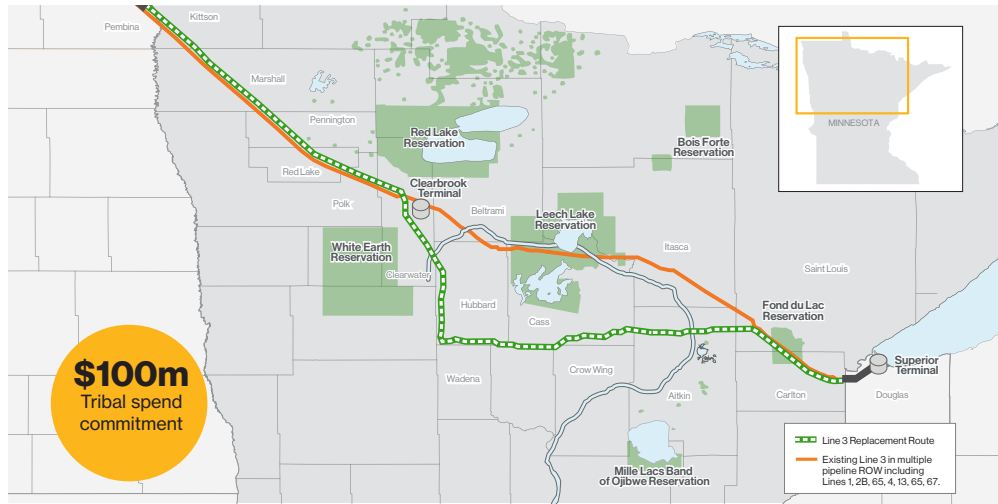
In 2019, we safely transported nearly **3.98 billion barrels of oil**, the highest volume in our 70-year history. Over the past decade, from 2010 through 2019 inclusive, we've transported more than 27.29 billion (27,291,644,312) barrels of crude, with a **safe delivery record of 99.99976%**. Our belief is that every incident can be prevented which drives this success, supported by billions of dollars spent to enhance the safety of our systems as well as programs, policies and procedures to reinforce a relentless focus on safety by every member of our team. Learn more at enbridge.com/safetyreport

3,980,194,221
Barrels of oil safely delivered in 2019

106
Barrels of oil spilled outside of Enbridge property in 2019

7
Total number of incidents*
(1 outside of Enbridge property)
*an incident in this example is the release of contained product from our system

Enbridge in Minnesota



Enbridge's Line 3 Replacement Project is maintenance and integrity driven.

Enbridge is replacing Line 3 to maintain high safety standards, reduce future maintenance activities and the resulting disruptions to landowners and the environment, as well as to provide long-term reliable delivery of North American crude oil.

Built in the 1960s, Line 3 is part of the Enbridge crude oil pipeline system known as the Mainline System. Line 3 is a 1,097-mile pipeline from Edmonton, Alberta to Superior, Wisconsin and currently operates below its designed capacity.

The Line 3 Replacement Project includes installing a 36-inch diameter pipeline to replace the existing 34-inch diameter pipeline generally along the existing Line 3 pipeline corridor from Joliette, North Dakota to Clearbrook, Minnesota. The replacement pipeline will follow other existing pipelines and electric power lines for more than 90 percent of the route east of Clearbrook to the border near Superior, Wisconsin.



> Pipeline pathways are called rights-of-way where the underground pipeline is placed and markers indicate the general location to inform communities of their existence in that area.

The regulatory and permitting process for the Line 3 Replacement Project in Minnesota is progressing following the February 3, 2020 Minnesota Public Utility Commission's (MPUC) reaffirming Certificate of Need and approving the Enbridge preferred route.

Before construction can begin:

- Enbridge needs a Final Authorization to Construction from the MPUC.
- There are more than 20 Federal, State and Local permits and approvals needed.



Tribes lead the cultural survey effort for Line 3

The U.S. Army Corps of Engineers (USACE) began tribal consultation for the proposed Line 3 Replacement Project on September 2, 2015. They reached out to 43 Tribes, resident Tribes and those with ancestral ties to the area and continues to consult with 39 Tribes.

Led by Fond du Lac Band of Lake Superior Chippewa, a tribal cultural survey was conducted along the Project corridor, across Minnesota and into North Dakota. With eyes and feet to the ground for more than 350 miles identifying significant cultural resources to be avoided, the tribal survey crews re-visited previously recorded sites, expanded/changed boundaries of a few previously documented sites, and identified 22 archaeological resources. In total, 15 locations were recommended for avoidance and Enbridge committed to avoid the resources and developed avoidance measures at each location.

A tribal monitoring plan is under development and will include qualified monitors from Tribal communities that wish to participate, providing the opportunity similar to the tribal survey and interview efforts.



> Home deliveries of essentials to elders and others were made in March, April and May.

More than working in the community

Enbridge is committed to supporting the communities near our operations and projects. For example, a vehicle donation was made to Federal Dam Fire Department last fall. Wells Academy Scholarship program received funds from Enbridge to support their training programs in Bemidji. Fond du Lac Forestry Management in Cloquet, Minnesota also accepted grant funding to support their program.

Enbridge has donated \$200,000 to tribal communities in Minnesota as part of a COVID-19 response. In addition, deliveries of medical personal protective equipment and other essentials were done in March, April and May. Across our North American operations, we've made similar donations within approximately 150 Indigenous communities to assist with their response to COVID-19.

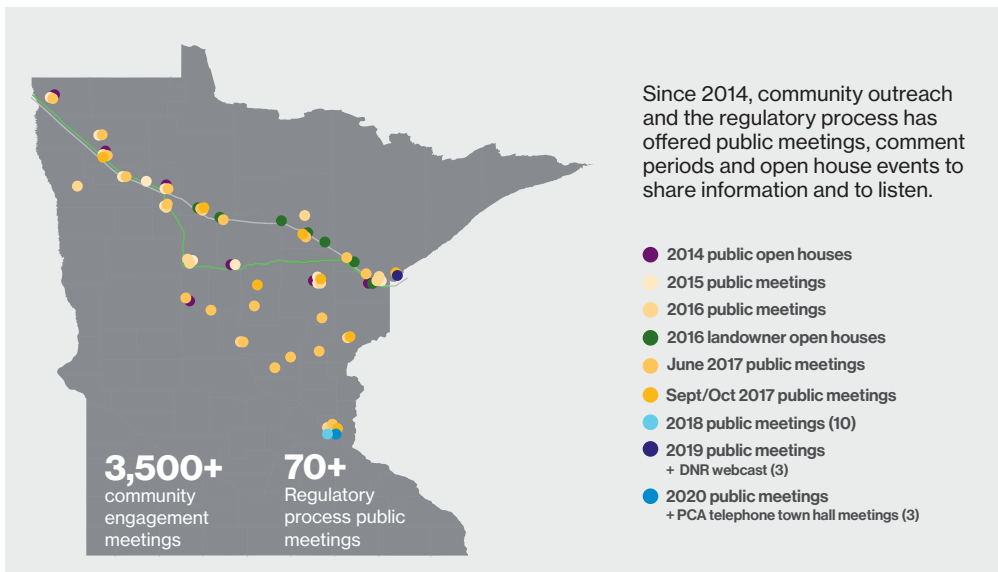


> Federal Dam Fire Dept accepts vehicle donation.



> Wells Academy accepts grant for scholarships.

For more information about our community investments and grants, visit enbridge.com.



60 | 9 | 1

62 Tribal citizens from 9 Tribal Nations were hired by Fond du Lac Band of Ojibwe

as Tribal Monitors and crew members on the Line 3 traditional archaeological surveys and tribal cultural resources surveys this fall.

To date the graduates from this training include 18 people from Mille Lacs, 14 people from White Earth, and several people from Leech Lake

Jobs training

Empowerment trainings held in partnership with Five Skies, a native-owned company, are underway. To date five, five-week classes have been completed up until the COVID-19 pandemic caused facility closures of the tribal casinos where the classes were being held. When it is safe and allowed to do so, these classes will begin again with the goal to train 300 or more Native Americans with skills to move to next steps in preparing for a career in the trades, including work on the Line 3 Replacement Project. Some graduates have already gone to work at pipe yard locations.



A team event: Enbridge and emergency response agencies practice together

Enbridge invests significantly in emergency response tools and training to stay prepared. Emergency response drills like the ones held in Bemidji and Cass Lake over the past couple of years help test and improve our emergency response preparedness and response systems in the unlikely event of a pipeline incident and meet a Department of Justice Consent Decree requirement.



Enbridge's comprehensive safety measures begin with prevention of an incident through 24/7 pipeline monitoring, inspection and routine maintenance. In the unlikely event of an incident, training exercises—like events held in Bemidji and Cass Lake—help us test, review and improve our emergency preparedness and response systems.

In addition to the 195 Enbridge team members, Leech Lake Band of Ojibwe, local, state and federal departments including the U.S. Environmental Protection Agency, federal regulatory agency (PHMSA), and Minnesota Department of Natural Resources also participated.

“These exercises are important to ensure our response plans are tested and to build relationships with local responders, stakeholders and responding agencies.”

> Stephen Lloyd, Enbridge Emergency Management Manager

Community investments and grants 2020 (Jan - mid-Apr) summary:

\$492,000+
across the state



Solar panels power Enbridge office

A solar project at Enbridge's Bemidji office was a collaboration with Native-owned partners like Wells Technology and EW&C as well as States Group. Red Lake Band Members worked on the project along side Enbridge workers who provided a mentoring experience. The project showed how a diverse team can come together to build a project toward a new energy future.

77
Number of graduates from 5 Skies Empowerment Training since September 2019

> Learn more at fiveskies.org or Facebook: @5SkiesTraining