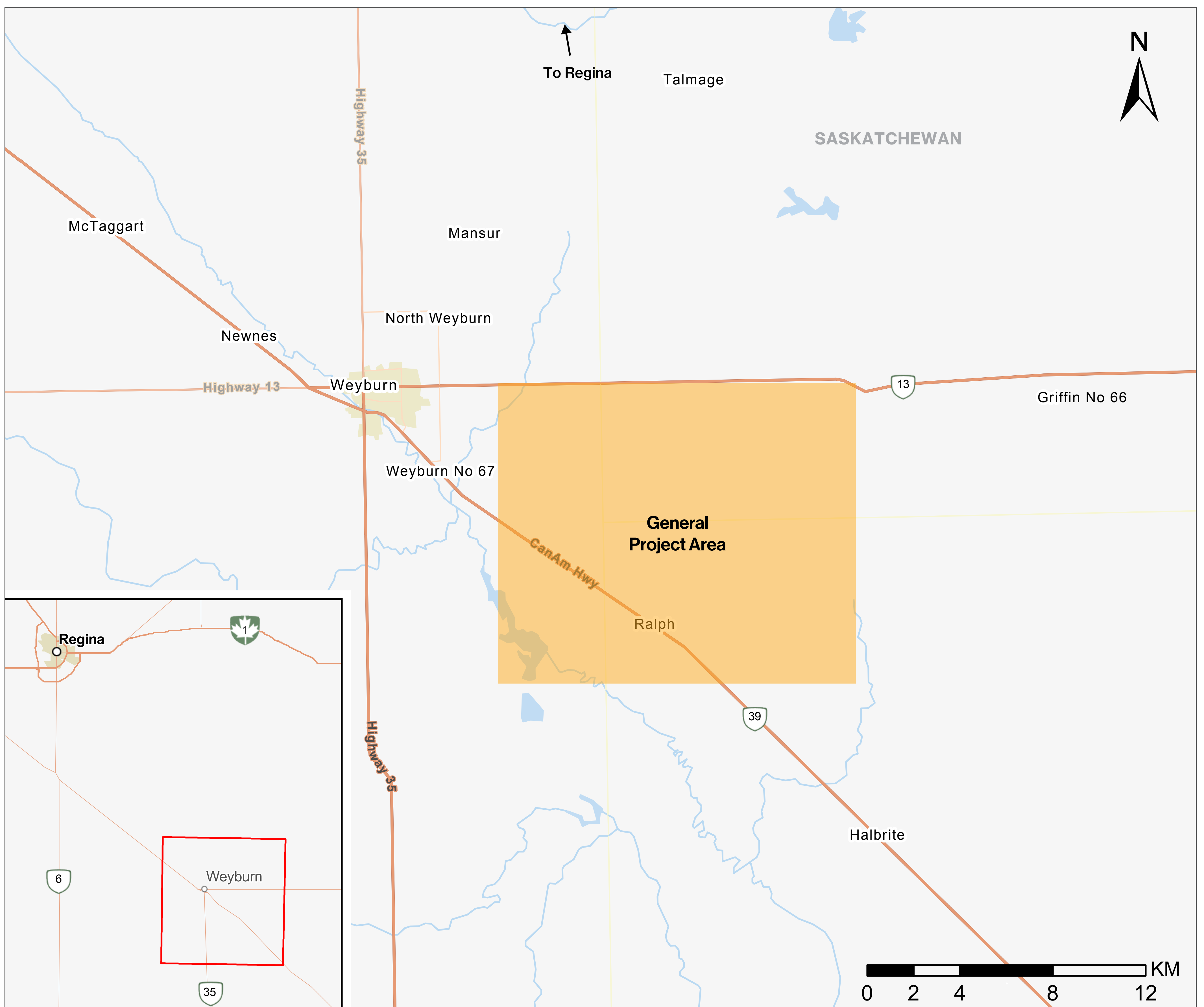


Seven Stars Energy Project

(formerly Weyburn Wind Project)

- Acquired by Enbridge in June 2024 from EDF Canada
- 200-megawatt wind energy project—we estimate that's enough to power **100,000 Saskatchewan homes annually**
- Emissions-free power generation, anticipated to begin operations in 2027
- **30-year project lifespan**
- Located southeast of Weyburn
 - Contracts covering ~21,000 acres (primarily in the RM of Griffin and RM of Weyburn)
- Aligns with Saskatchewan's goal of **reducing greenhouse gas emissions** from the provincial electrical grid
- Project is being advanced with Indigenous partners who can acquire at least **30% equity ownership**



Preliminary project timeline and milestones

Fall 2023 to Fall 2024

- Environmental field studies

Summer 2024 to Fall 2024

- Stakeholder Engagement Program

July 17, 2024

- Open House 1

Fall 2024

- Open House 2

December 2024

- Submission of Environmental Impact Statement to Ministry of Environment, Environmental Assessment and Stewardship Branch (EASB)

As early as Q1 2025

- Enbridge final investment decision

Approval anticipated Q2 2025

- EASB review and approval

Q3 2025

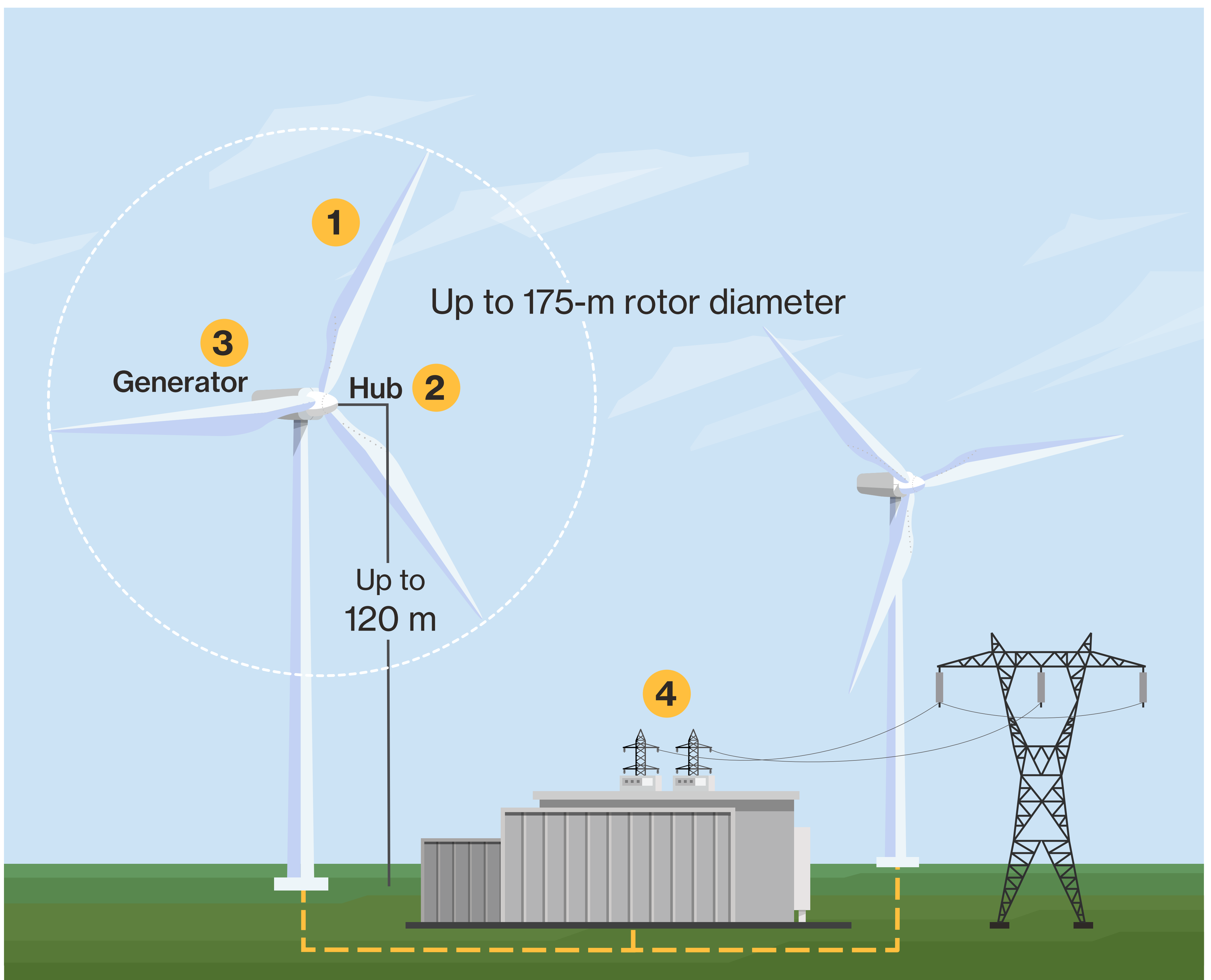
- Earliest possible construction start
(Dependent on SaskPower Interconnection process, major equipment procurement and project permitting)

2027

- Commencement of operation

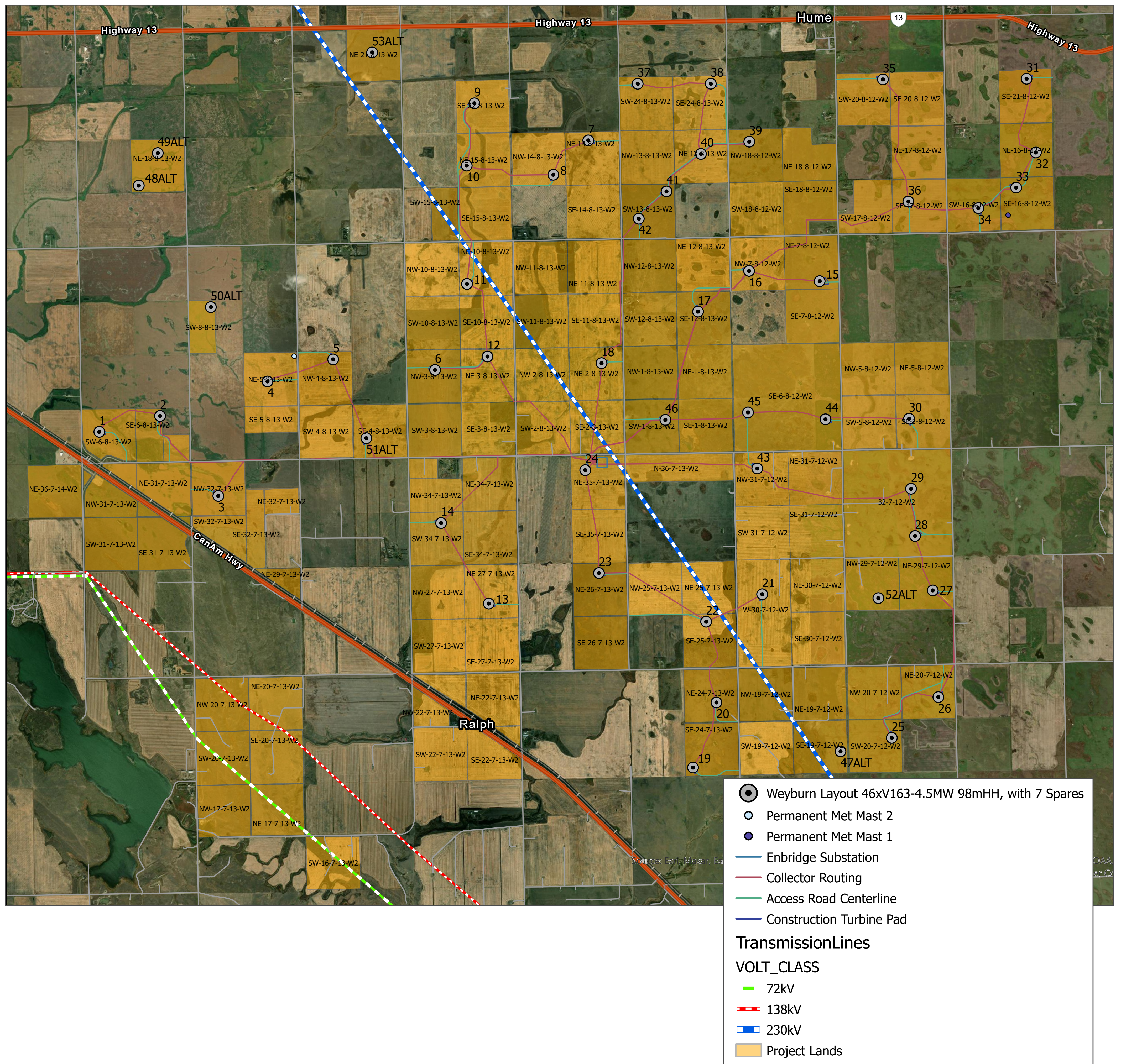
How a wind turbine works

- 1** Wind hits rotor blades and makes them turn
- 2** Kinetic energy is transmitted from the hub to the gear box
- 3** Generator converts kinetic energy to electrical energy
- 4** Power is transmitted through low, medium or high voltage cables, and fed into the grid



Turbine locations and SaskPower interconnection

- **46 turbines** planned to generate ~200 megawatts (MW) of power
 - Each turbine will have a capacity of 4.5 MW
- **13.8-kilovolt (kV) collector system** will bring power to a project substation
 - Substation, SaskPower facilities and interconnection planned on one quarter section
- **Existing 230kV transmission line** through project area
- Two permanent **meteorological towers** (SaskPower requirement)
- **Operations and maintenance facility**— we will either secure a facility in Weyburn or construct within the project area



Project construction

- Access to each turbine will be via gravel road
- Length of roads minimized where possible to reduce impact to land
- During construction, trucks carrying large turbine components require larger turning radius; land impacted by this will be reclaimed
- Turbines will be connected to the substation by medium-voltage collector cables



Project construction

- 1** Turbines shipped in sections and assembled onsite with large cranes
- 2** Tower sections erected and bolted
- 3** Nacelle is placed on top of the assembled tower
- 4** Power train installed and connected within the nacelle
- 5** Blades are bolted to the hub
- 6** Electrical wiring is pulled up the tower and connected



Environment, health and safety

Through every stage of the Seven Stars Energy Project, we seek to minimize impact to land, water and communities

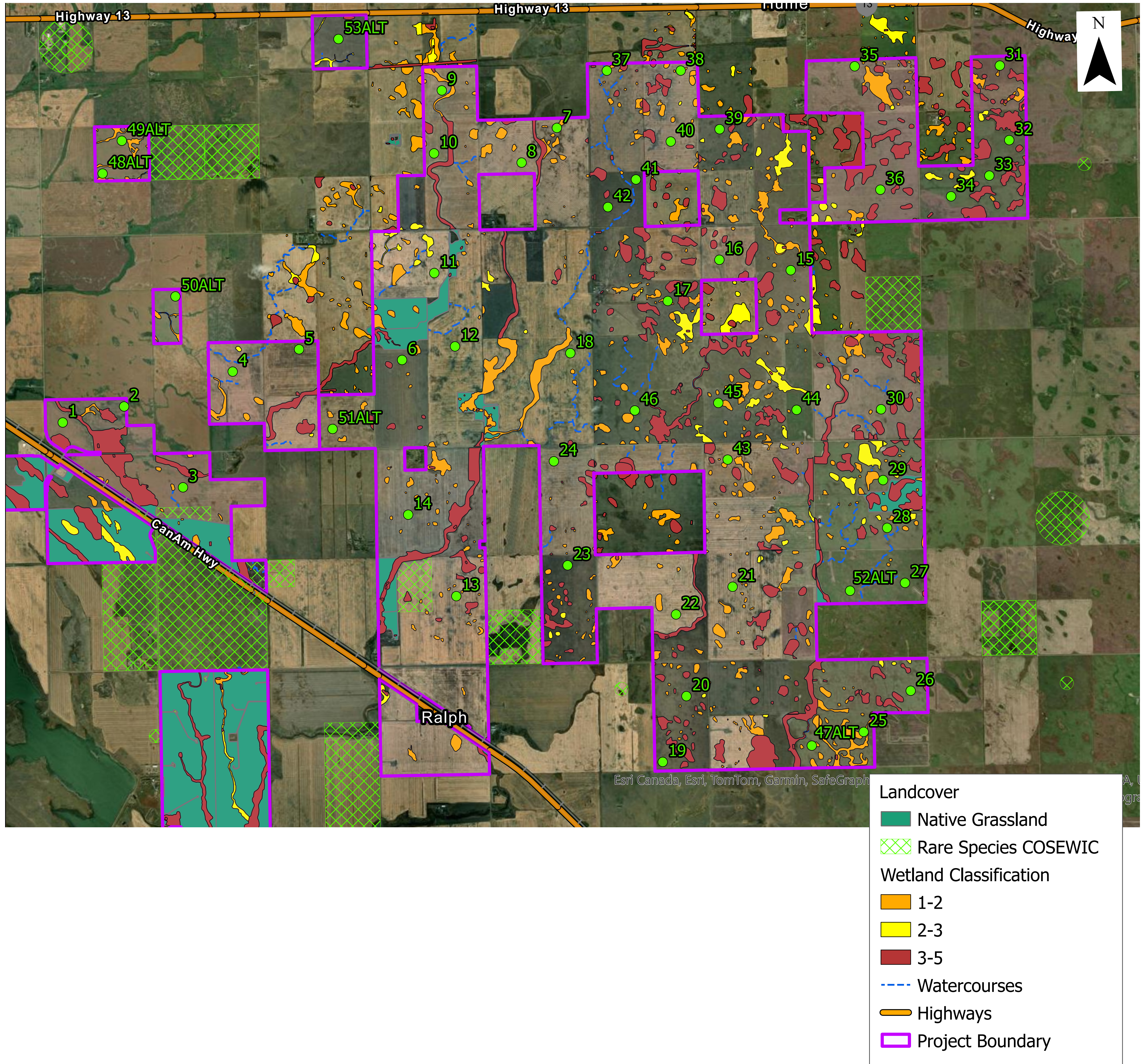
- New wind farms undergo rigorous environmental studies before they can proceed
- Studies for the Project will include:
 - Bird migration and breeding surveys (Fall 2023 and Spring 2024)
 - Sensitive bird species and raptor nest surveys (Spring 2024)
 - Amphibian Surveys (Spring 2024)
 - Bat surveys (Fall 2023 and Summer 2024)
 - Rare vegetation surveys (Summer 2024)
 - Wetland and watercourse surveys (Spring and Summer 2024)
 - Heritage Resources (Summer and Fall 2024)
- Data from environmental studies used to assess potential impacts and inform mitigation plans
- Compliance with provincial Acts and Regulations and adherence to best management practices will ensure conservation of environmentally sensitive areas and wildlife habitat



- Enbridge's SunBridge Wind project began operating in southern Saskatchewan in 2002 and provided emissions-free power for the province for 20 years.

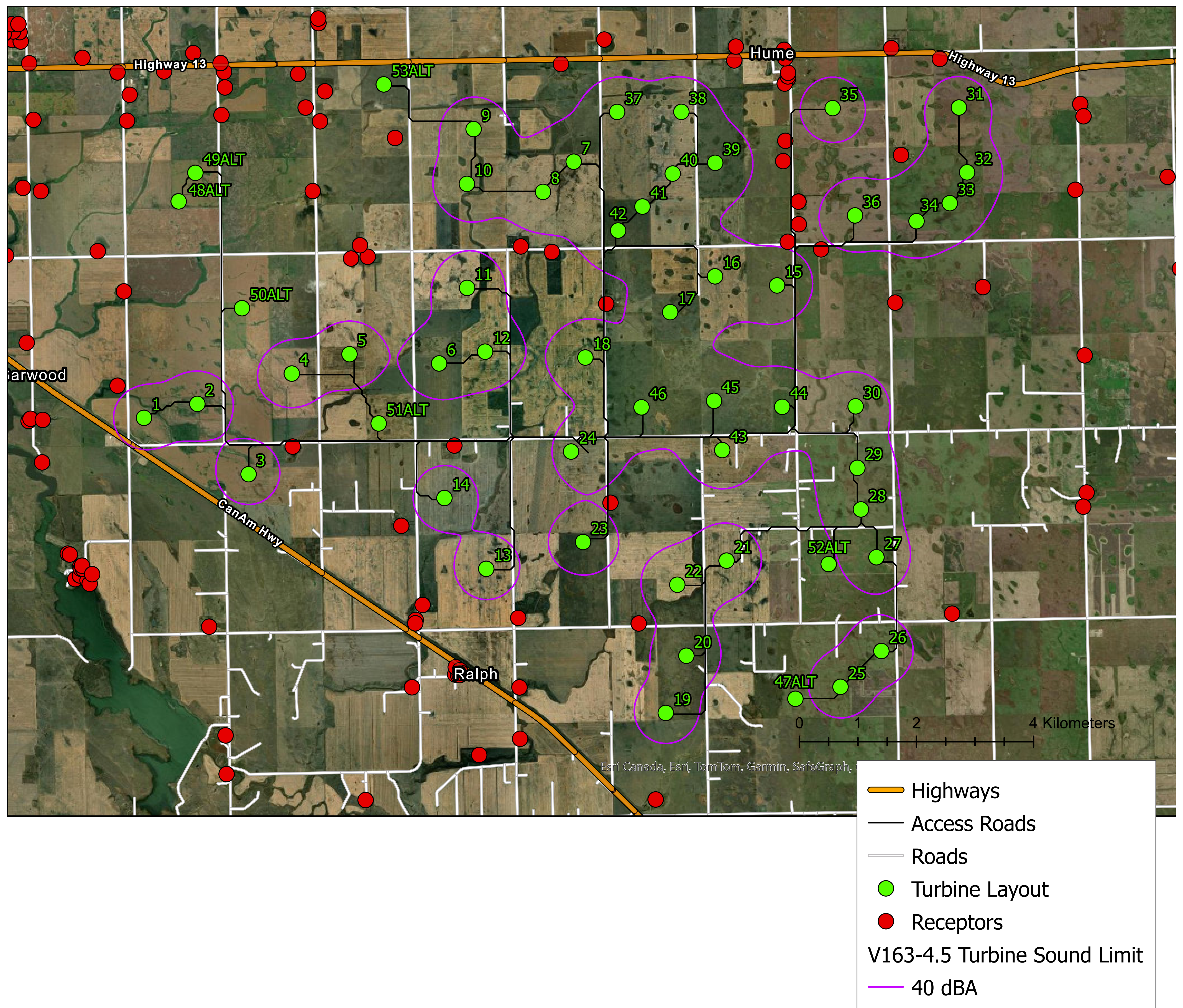
Environmental features map

Preliminary project layout developed to minimize potential impact to land, water and the community



Noise control

- Cumulative noise from facility will be less than 40 decibels at residences (equivalent to a whisper from 1.5 meters, or 5 feet, away)
- Independent health experts conclude that living in proximity to wind turbines does not pose a threat to public health:
 - More than 100 peer-reviewed scientific research papers and government reports (Canada, U.S., UK and Australia)
 - Health Canada study (2014) found no evidence to support a link between self-reported human health issues and exposure to wind turbine noise



Environment—permitting and reclamation

Permits required:

- **Environmental Assessment** reviewed by Ministry of Environment
- **Heritage Review** reviewed by Saskatchewan Heritage Conservation Branch
- **Aquatic Habitat Protection** Permits may be required and would be reviewed by Saskatchewan Water Security Agency

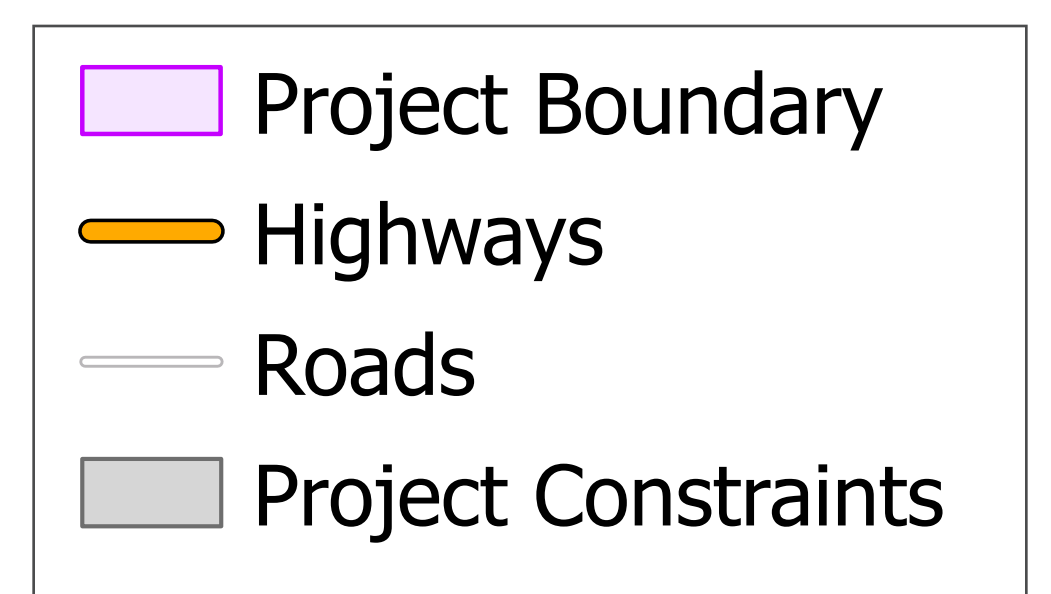
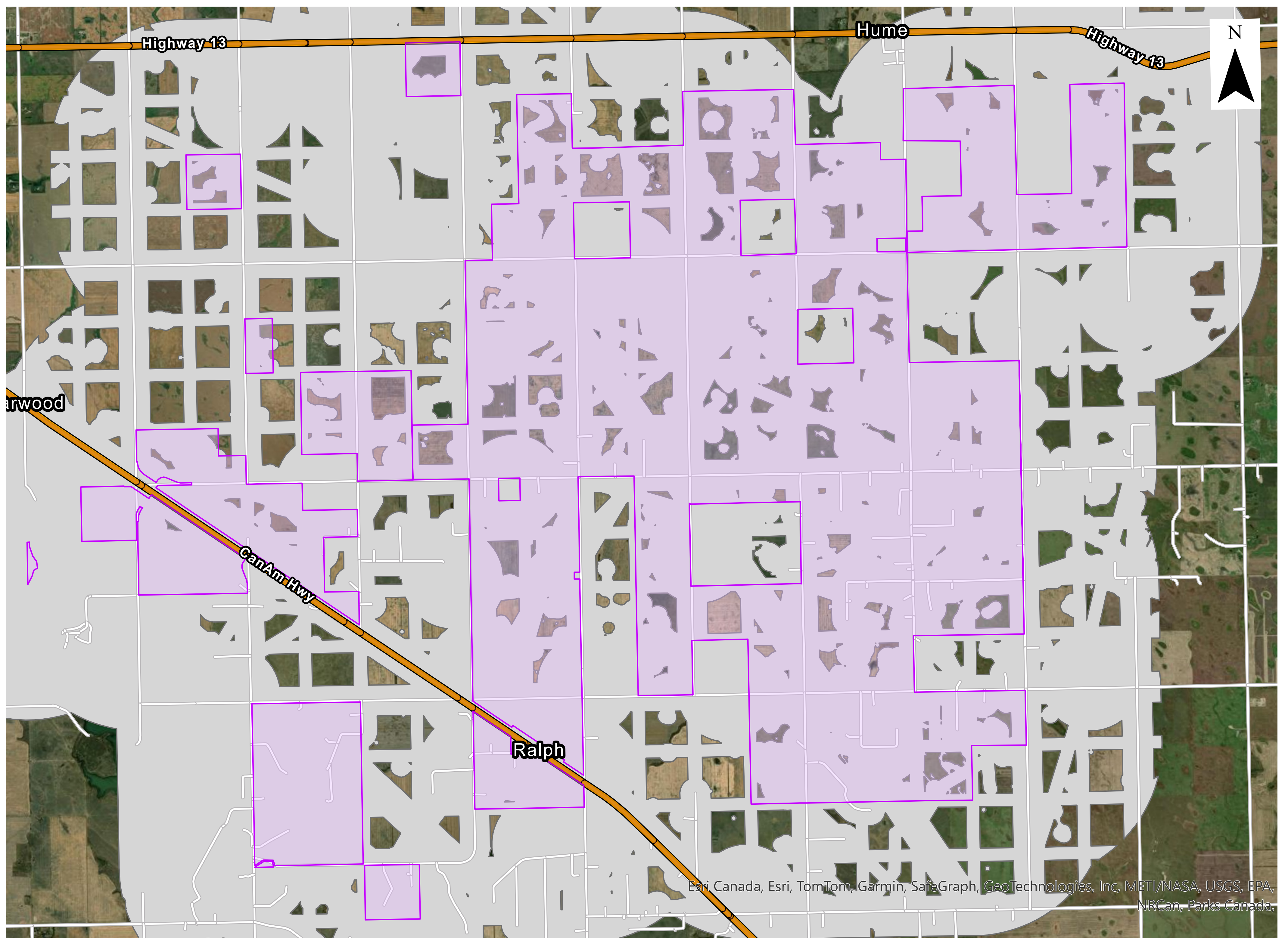
Reclamation and operations:

- **Post-construction reclamation monitoring** to ensure temporarily disturbed land is returned to pre-construction state
- **Bird surveys** are required for at least the first ten years of operation to identify any direct wildlife impacts
- **Final reclamation** at the end of the project's life



Project constraints

- In developing the project layout, setback requirements are assessed (residences, roads, environmental features, property lines, wells, pipelines, transmission lines, etc.)
- A constraints map is built by removing project areas where turbines cannot be placed
- Enbridge has filed an amendment to the RM of Weyburn to update the Zoning Bylaw for development of commercial scale wind facilities. The amendment requests clarity and practicality of the setback requirements while striving to balance responsible wind development



Community and regional benefits

- **Tax income** for the RM of Weyburn and RM of Griffin
- **Job creation** during construction and ongoing long-term jobs during 30-year operation of the facility
 - Estimated 200 jobs during construction
 - Estimated four to eight permanent and part-time positions during operation of the facility
- Spin-off benefits for the community through spending locally during construction and operations
- **Local and Indigenous employment opportunities**
- **Compensation** for project landowners



Indigenous communities will benefit from equity ownership

- Six Nations Energy Development Limited Partnership, a newly created Indigenous consortium, will steward investment in the Seven Stars project on behalf of:
 - Cowessess First Nation
 - George Gordon First Nation
 - Kahkewistahaw First Nation
 - Métis Nation-Saskatchewan
 - Pasqua First Nation
 - White Bear First Nations
- Collective opportunity to acquire at least 30% equity ownership
- Financing support via loan guarantee of up to \$100 million from the Saskatchewan Indigenous Investment Finance Corporation
- Indigenous partners will seek additional financing support at the federal level



- Enbridge and Indigenous partners announce our intent to work together on the project at a press conference in Regina.